



**Project**

City Gateway,  
Port Salford Extension

**Location**

Irlam, Manchester

**Client**

Peel L&P

**Principal contractor**

Salford City Council

**Powers involvement**

Topographical survey

**Project completion**

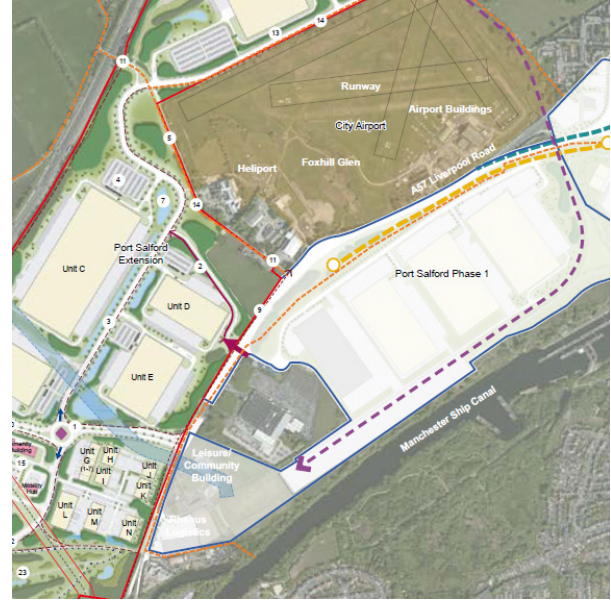
April 2022

**Value of the Project**

£138m

City Gateway is a development which plans to extend Port Salford, creating thousands of new jobs with ambitions to join the Liverpool and Manchester waterways. The extension will generate 185 construction jobs and 9,600 jobs once fully operational. The plans come after the Queen's speech, which addressed Liverpool Gateway (with several other waterway terminals) to be established as a freeport. City Gateway is part of the Places for Everyone (PfE) plan to create new jobs, new homes, and sustainable growth. Port Salford is anticipated to be the UK's first tri-modal inland waterway port, which will serve ship, rail, and road. This project is led by Peel L&P, working in partnership with Salford City Council (SCC).

# City Gateway, Port Salford Extension



## ABOUT THE PROJECT

The development framework was submitted to SCC and the Greater Manchester Combined Authority (GMCA) to illustrate the City Gateway development opportunity. This will include an inland port, rail link, container terminal facility and over 4m sq. ft of logistics floor space. It's expected to support 16 trains a day, whilst also having the capacity to sustain European trains, which are 775m-long.

The extension is expected to:

- Create thousands of new job opportunities for local people
- Form a new junction with the M62 and provide a link road to the A57 dual carriageway and enable quicker access to the motorways
- Reduce costs of import and export for UK businesses
- Save millions of tons of carbon by reducing lorry miles, congestion, and increasing the use of the Manchester Ship Canal. Making it a more sustainable transport link

Port Salford is a key part of the industrial and logistics strategy, due to its location near the motorway. The extension will deliver a multi-modal logistics hub, which comprises 320,000sqm of floor space. This will deliver state-of-the-art logistic facilities, offering an attractive location for a UK-wide based logistics operation.

## OUR INVOLVEMENT

The site is being developed by Peel L&P. Over the years, Powers has provided Peel L&P with a variety of surveying services including large topographical surveys and underground utility detection, of North West based projects. Powers provided Peel L&P with a topographical survey of the Port Salford Extension area, including large fields, that are adjacent to the M60 and M62 motorways and the A57. The topographic survey provided defined spatial data, to be used by Peel L&P to help them design and plan the development.





## THE CHALLENGES

Programmes for building design and construction have sequences in which tasks are carried out so a project can be completed on time. Programming issues relating to the construction of the project are always a problem for companies such as Peel, which is why a topographic survey is needed for work to commence. It allows for changes to be made continuously. A topographical survey is a basis for construction designs, and the topographical drawings will help further down the line of the construction project accurately reflect the ground's current condition. Once work begins in the area, if the ground doesn't correspond with the drawing, it would mean the construction process would have to start from square one.

## THE OUTCOME

The topographical survey provided by Powers enabled Construction work to begin. The project will be done in phases and Peel is hopeful the entire project will be completed by 2038.

The Port Salford Extension will capitalise on and enhance the area's current connectivity to be able to deliver a UK-wide tri-modal logistics hub. The extension could also include a new Neighbourhood Park, Mossland Park Gateway, and greenspace.

“

Peel has used Powers on various stages of the Port Salford project and has always found them to be helpful and accurate. Part of the reason we continuously use Powers is due to the team's ability to deliver the work on time and to a high, professional standard.

Matt Stafford

Associate Director Land & Planning, Peel L&P